

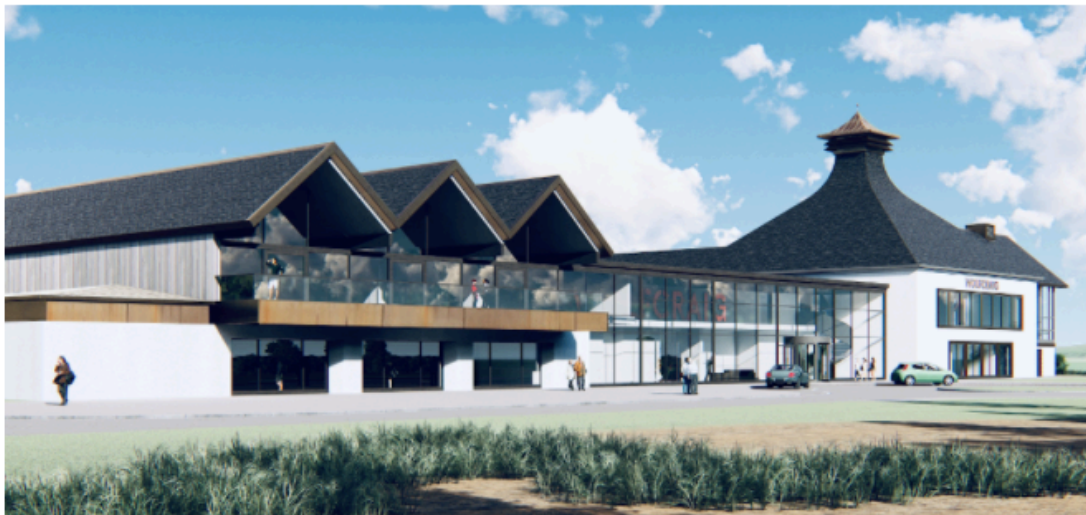
SCOTTISHCONSTRUCTIONNOW.COM

8 OCTOBER 2020

UU: 15,218

Plans submitted for £15m new Stirling distillery

Proposals for a new £15 million whisky distillery near Stirling have been submitted for planning approval.



The application by **Wolfcraig** lays out plans for a new whisky experience near Stirling that will incorporate the distillery, an interactive, education-focused family visitor attraction, private tasting room and 180-cover bistro restaurant and bar.

Subject to planning approval, construction is expected to get underway in spring 2021 with the distillery set to open its doors in summer 2022. It is anticipated that the distillery will employ around 50 full-time staff members.

The building, designed by **Opfer Logan Architects**, will maximise its location, showcasing a stunning vista across to the iconic Wallace Monument and Stirling Castle. It will also harness the latest technologies to ensure that sustainability is at its core.

The distillery will have the capacity to produce up to 1.5 million litres of spirit per year and will focus on producing premium Wolfcraig Highland Single Malt Scotch Whisky in addition to a range of other associated spirits.

The distillery's interactive visitor centre will showcase tales of Scotland's national drink, as well as bringing Stirling's colourful past to life. In addition to tours, plans are also being made to offer a range of different experiences and masterclasses.